

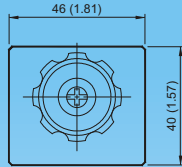
## DIMENSIONS

## MILLIMETERS(INCHES)

**MB\*-01**

### Relief Valves(Modular Type)

MOUNTING SURFACE:MB\*-01-CETOP3  
ISO 03-NFPAD03

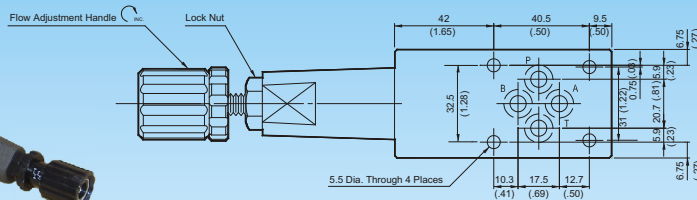


#### Valve Specifications & Attachment

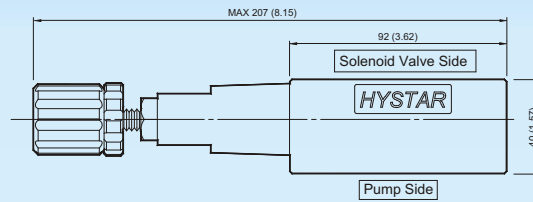
Flow Rating	50 lpm (13.2 gpm)
Max. Pressure	250 bar (3600 psi)
Weight kg/(lbs.)	1.1 (2.4)
CODE:20	M5 X85LgX4pcs
CODE:2090	10-24UNCX3-4/4"LgX4pcs
Mounting Surface O-Ring	P9 x 2 pc



SYMBOL



OPTION  
Design No: 30 (3090)

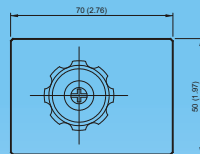
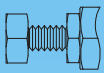


**MB\*-03**

### Relief Valves(Modular Type) (MBA-MBB-MBP-03)

MOUNTING SURFACE:MB\*-03-CETOP5  
ISO 05-NFPAD05

OPTION  
Design No: 30 (3090)

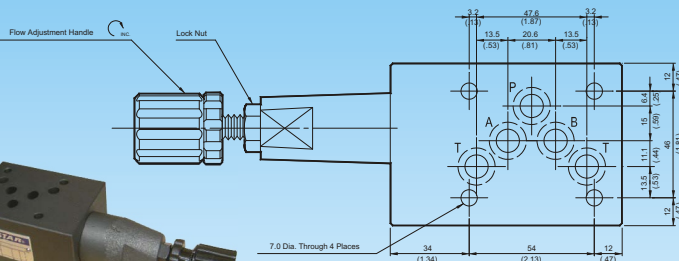
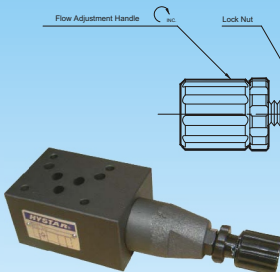


#### Valve Specifications & Attachment

Flow Rating	100 lpm (26.5 gpm)
Max. Pressure	250 bar (3600 psi)
Weight kg/(lbs.)	3.5 (7.7)
CODE:20	M6 X90LgX4pcs
CODE:2090	1/4-20UNCX3-1/2LgX4pcs
Mounting Surface O-Ring	P12 x 5 pc



SYMBOL



MB\*-03-L

