



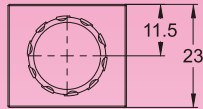
## DIMENSIONS

## MILLIMETERS(INCHES)

### MBW-01 Relief Valves(Modular Type)

MOUNTING SURFACE:MB\*-01-CETOP3  
ISO 03-NFPAD03

OPTION  
Design No: 30 (3090)

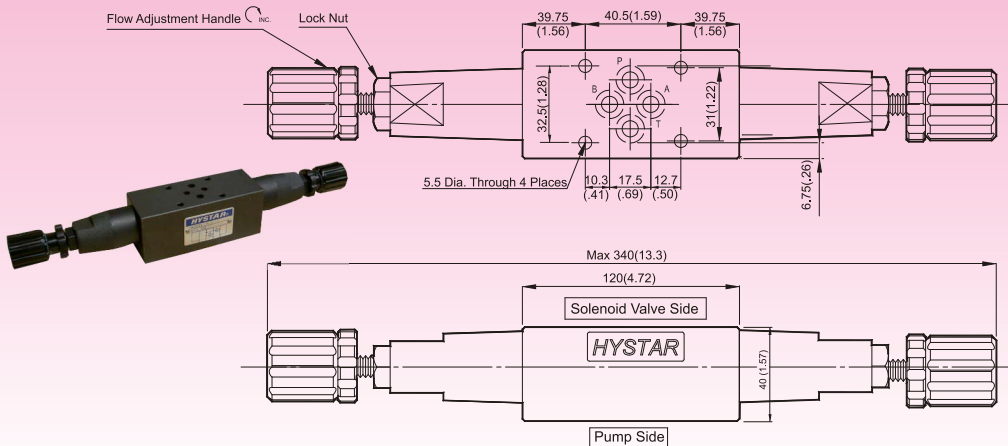


#### Valve Specifications & Attachment

Flow Rating	50 lpm (13.2 gpm)
Max. Pressure	250 bar (3600 psi)
Weight kg.(lbs.)	1.1 (2.4)
CODE:20	M5 X95LgX4pcs
CODE:2090	10-24UNCX4*LgX4pcs
Mounting Surface O-Ring P9 x 2 pc	



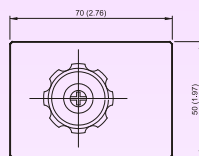
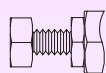
SYMBOL



### MBW-03 Relief Valves(Modular Type)

MOUNTING SURFACE:MB\*-03-CETOP5  
ISO 05-NFPAD05

OPTION  
Design No: 30 (3090)



#### Valve Specifications & Attachment

Flow Rating	100 lpm (26.5 gpm)
Max. Pressure	250 bar (3600 psi)
Weight kg.(lbs.)	3.5 (7.7)
CODE:20	M6 X90LgX4pcs
CODE:2090	1/4-20UNCX3-1/2LgX4pcs
Mounting Surface O-Ring P12 x 5 pc	



SYMBOL

