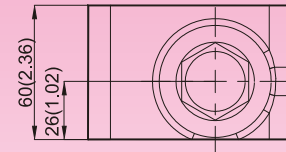
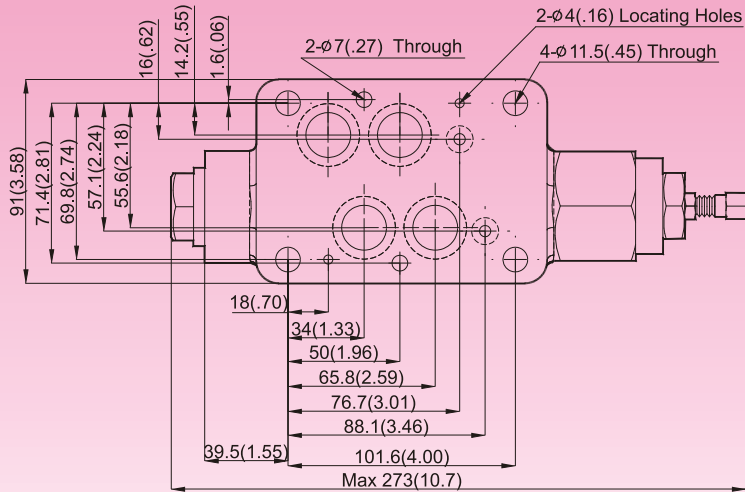


DIMENSIONS

MILLIMETERS(INCHES)

MB*-04 Relief Valves(Modular Type)

MOUNTING SURFACE:MB*-04-CETOP7
ISO 07-NFPAD07



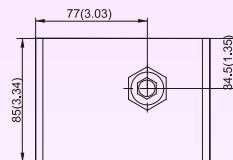
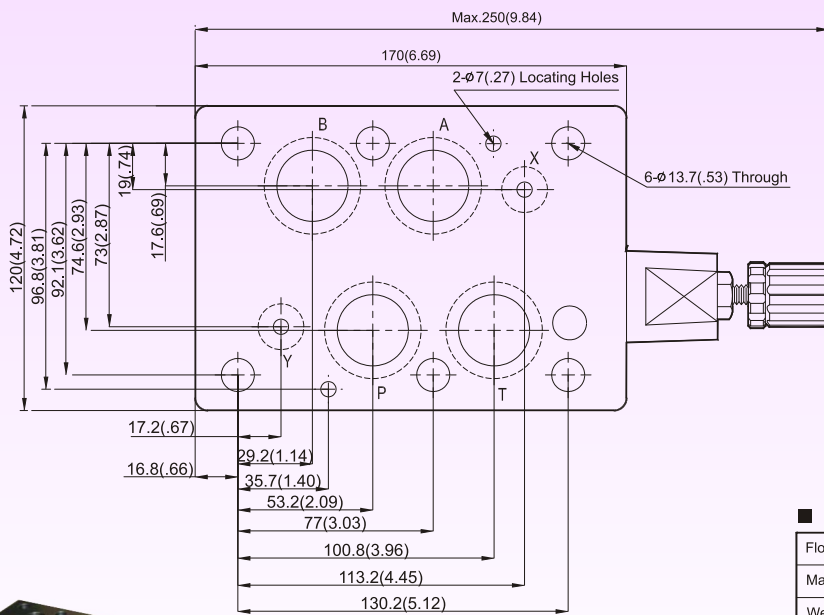
MBA-04
MBB-04
MBP-04

Valve Specifications & Attachment

Flow Rating	190 lpm (50.2 gpm)
Max. Pressure	250 bar (3600 psi)
Weight kg.(lbs.)	7.0 (15.4)
CODE:20	M6X125LgX2pcs M10X120LgX4pcs
CODE:2090	1/4-20UNCX4-7/8"LgX2pcs 3/8-16UNCX4-5/8"Lg X4pcs
Mounting Surface O-Ring P9 x 2 pc & P22A x 4 pcs	

MB*-06 Relief Valves(Modular Type)

MOUNTING SURFACE:MB*-06-CETOP8
ISO 08-NFPAD08



MBA-06
MBB-06
MBP-06

Valve Specifications & Attachment

Flow Rating	300 lpm (79.3 gpm)
Max. Pressure	250 bar (3600 psi)
Weight kg.(lbs.)	11.2 (24.6)
CODE:20	M12X140LgX6pcs
CODE:2090	1/2-13UNCX4-5/8"Lg X6pcs
Mounting Surface O-Ring P12 x 2 pc, P28 x 4 pcs	