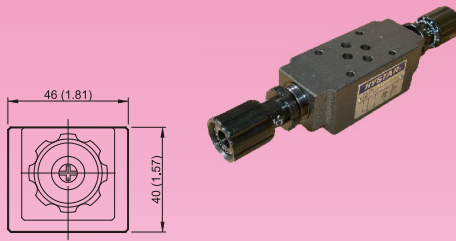


MSW-01 Throttle with Check Valves(Modular Type)

MOUNTING SURFACE:MS*-01-CETOP3
ISO 03-NFPAD03

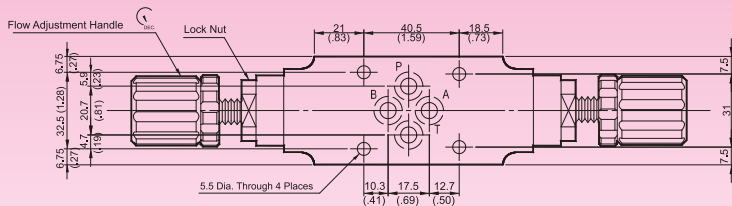


Valve Specifications & Attachment

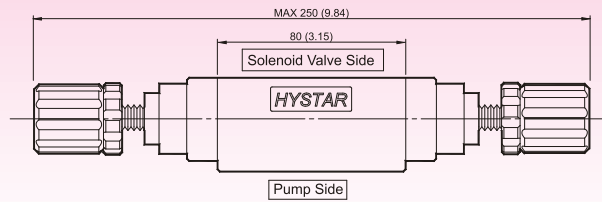
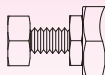
Flow Rating	50 lpm (13.2 gpm)
Max. Pressure	250 bar (3600 psi)
Weight kg.(lbs.)	1.5 (3.3)
CODE:20	M5 X85LgX4pcs
CODE:2090	10-24UNCX3-1/4"LgX4pcs
Mounting Surface O-Ring	P9 x 4 pc



SYMBOL



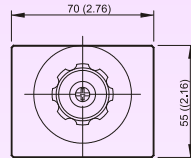
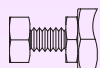
OPTION
Design No: 30 (3090)



MSW-03 Throttle with Check Valves(Modular Type)

MOUNTING SURFACE:MS*-03-CETOP5
ISO 05-NFPAD05

OPTION
Design No: 30 (3090)



Valve Specifications & Attachment

Flow Rating	100 lpm (26.5 gpm)
Max. Pressure	250 bar (3600 psi)
Weight kg.(lbs.)	3.7 (8.2)
CODE:20	M6 X90LgX4pcs
CODE:2090	1/4-20UNCX3-1/2LgX4pcs
Mounting Surface O-Ring	P12 x 5 pc



SYMBOL

