



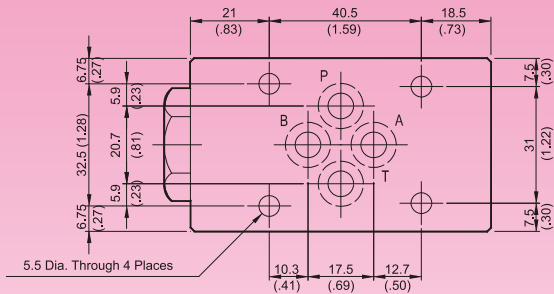
DIMENSIONS

MILLIMETERS(INCHES)

MC*-01

Check Valves(Modular Type)

MOUNTING SURFACE:MC*-01-CETOP3
ISO 03-NFPAD03

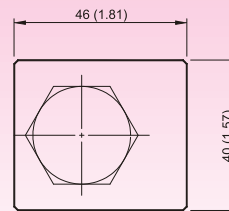
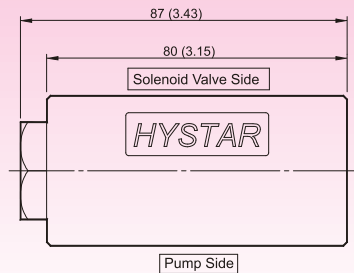


Valve Specifications & Attachment

Flow Rating	50 lpm (13.2 gpm)
Max. Pressure	250 bar (3600 psi)
Weight kg/(lbs.)	1.1 (2.4)
CODE:20	M5 X85LgX4pcs
CODE:2090	10-24UNCX3-1/4"LgX4pcs
Mounting Surface O-Ring P9 x 4 pc	



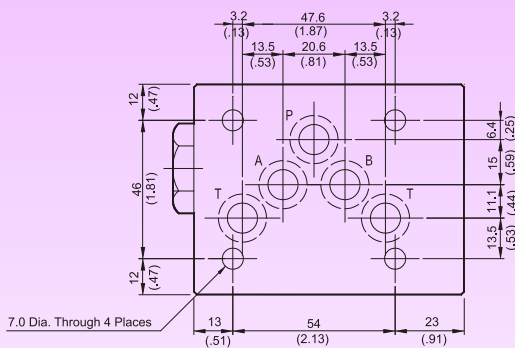
SYMBOL



MC*-03

Check Valves(Modular Type)

MOUNTING SURFACE:MC*-03-CETOP5
ISO 05-NFPAD05



Valve Specifications & Attachment

Flow Rating	100 lpm (26.5 gpm)
Max. Pressure	250 bar (3600 psi)
Weight kg/(lbs.)	3.5 (7.7)
CODE:20	M6 X90LgX4pcs
CODE:2090	1/4-20UNCX3-1/2LgX4pcs
Mounting Surface O-Ring P12 x 5 pc	



SYMBOL

