

DIMENSIONS

MILLIMETERS(INCHES)

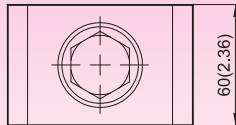
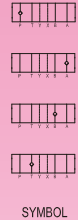
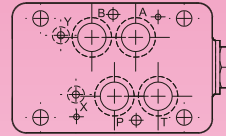
MCP-04 Check Valves(Modular Type)

MOUNTING SURFACE:MC*-04-CETOP7
ISO 07-NFPAD07

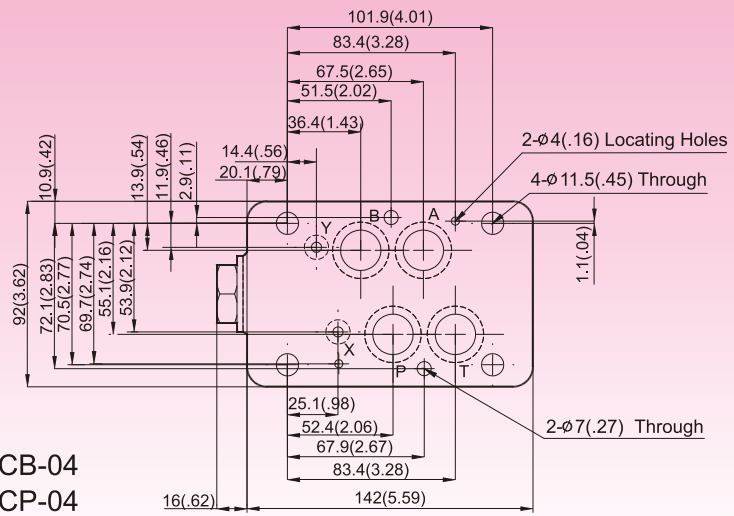
Valve Specifications & Attachment

Flow Rating	190 lpm (50.2 gpm)
Max. Pressure	250 bar (3600 psi)
Weight kg(lbs.)	7.0 (15.4)
CODE:20	M6X125LgX2pcs M10X120LgX4pcs
CODE:2090	1/4-20UNCX4-7/8"LgX2pcs 3/8-16UNCX4-5/8"Lg X4pcs
Mounting Surface O-Ring P9 x 2 pc & P22A x 4 pcs	

MCA-04
MCT-04



MCB-04
MCP-04



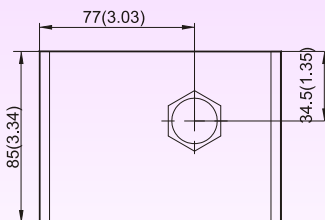
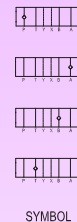
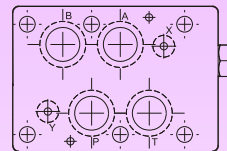
MCP-06 Check Valves(Modular Type)

MOUNTING SURFACE:MC*-06-CETOP8
ISO 08-NFPAD08

Valve Specifications & Attachment

Flow Rating	300 lpm (79.3 gpm)
Max. Pressure	250 bar (3600 psi)
Weight kg(lbs.)	11.2 (24.6)
CODE:20	M12X140LgX6pcs
CODE:2090	1/2-13UNCX4-5/8"Lg X6pcs
Mounting Surface O-Ring P12 x 2 pc, P28 x 4 pcs	

MCA-06
MCT-06



MCB-06
MCP-06

