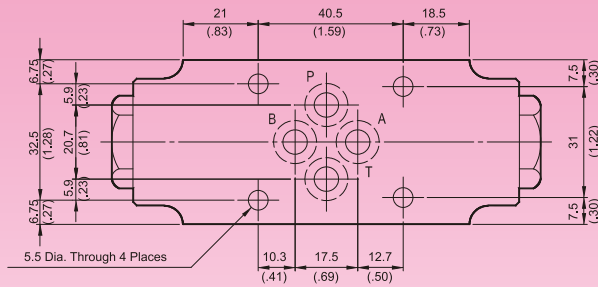


### MPW - 01

### Pilot Operated Check Valves(Modular Type)

MOUNTING SURFACE:MP\*-01-CETOP3  
ISO 03-NFPAD03



#### Valve Specifications & Attachment

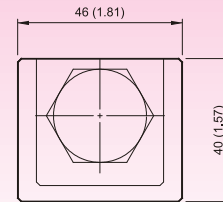
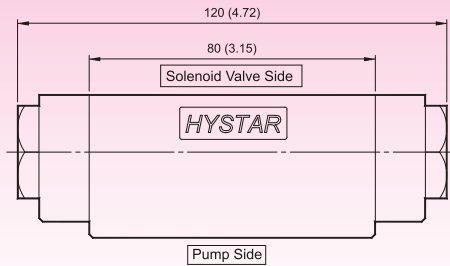
Flow Rating	50 lpm (13.2 gpm)
Max. Pressure	250 bar (3600 psi)
Weight kg.(lbs.)	1.2 (2.6)
CODE:20	M5 X85LgX4pcs
CODE:2090	10-24UNCX3-1/4"LgX4pcs
Mounting Surface O-Ring P9 x 4 pc	



SYMBOL



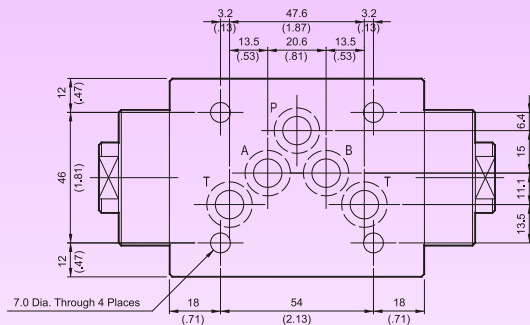
D



### MPW - 03

### Pilot Operated Check Valves(Modular Type)

MOUNTING SURFACE:MP\*-03-CETOP5  
ISO 05-NFPAD05



#### Valve Specifications & Attachment

Flow Rating	100 lpm (26.5 gpm)
Max. Pressure	250 bar (3600 psi)
Weight kg.(lbs.)	3.5 (7.7)
CODE:20	M6 X90LgX4pcs
CODE:2090	1/4-20UNCX3-1/2LgX4pcs
Mounting Surface O-Ring P12 x 5 pc	



SYMBOL



### MPW-03-30

