

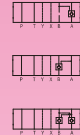
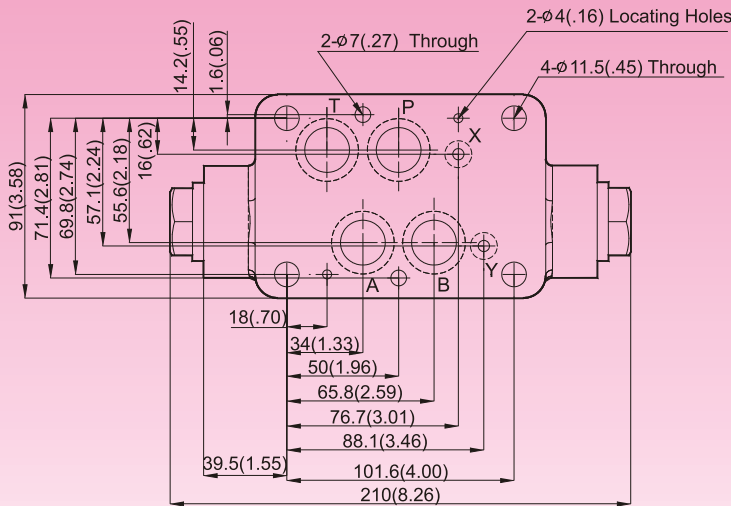


DIMENSIONS

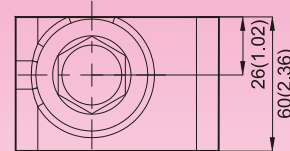
MILLIMETERS(INCHES)

MPW - 04 Pilot Operated Check Valves(Modular Type)

MOUNTING SURFACE:MP*-04-CETOP7
ISO 07-NFPAD07



SYMBOL



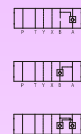
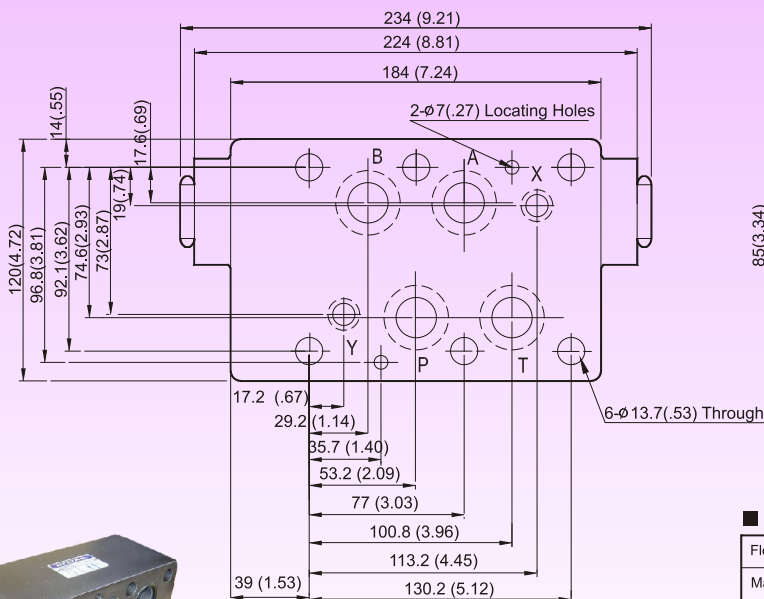
MPA-04
MPB-04
MPW-04

Valve Specifications & Attachment

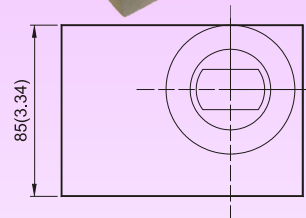
Flow Rating	190 lpm (50.2 gpm)
Max. Pressure	250 bar (3600 psi)
Weight kg.(lbs.)	7.0 (15.4)
CODE:20	M6X125LgX2pcs M10X120LgX4pcs
CODE:2090	1/4-20UNCX4-7/8"LgX2pcs 3/8-16UNCX4-5/8"Lg X4pcs
Mounting Surface O-Ring P9 x 2 pc & P22A x 4 pcs	

MPW - 06 Pilot Operated Check Valves(Modular Type)

MOUNTING SURFACE:MP*-06-CETOP8
ISO 08-NFPAD08



SYMBOL



MPA-06
MPB-06
MPW-06

Valve Specifications & Attachment

Flow Rating	300 lpm (79.3 gpm)
Max. Pressure	250 bar (3600 psi)
Weight kg.(lbs.)	11.2 (24.6)
CODE:20	M12X140LgX6pcs
CODE:2090	1/2-13UNCX4-5/8"Lg X6pcs
Mounting Surface O-Ring P12 x 2 pc, P28 x 4 pcs	