

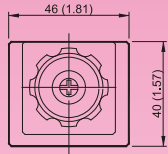
## DIMENSIONS

## MILLIMETERS(INCHES)

### MHB-01

### Counterbalance Valves(Modular Type)

MOUNTING SURFACE:MH\*-01-CETOP3  
ISO 03-NFPAD03

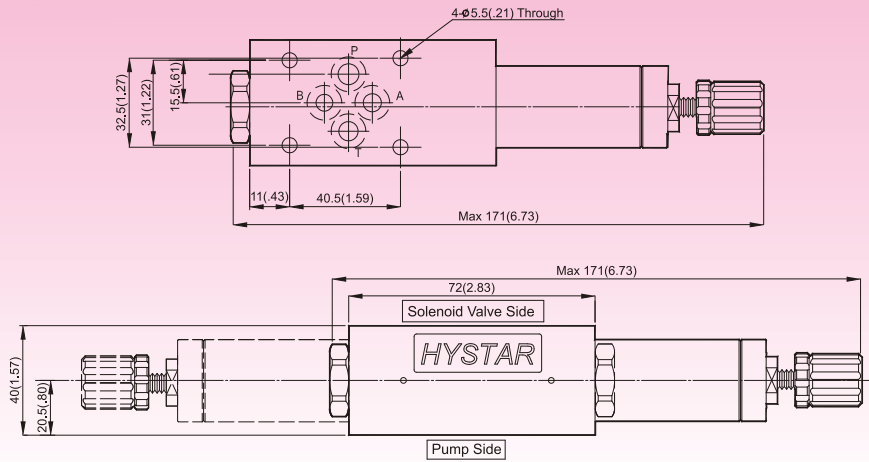


#### Valve Specifications & Attachment

Flow Rating	50 lpm (13.2 gpm)
Max. Pressure	250 bar (3600 psi)
Weight kg(lbs.)	1.1 (2.4)
CODE:20	M5 X85LgX4pcs
CODE:2090	10-24UNCX3-4/4"LgX4pcs
Mounting Surface O-Ring	P9 x 2 pc



SYMBOL



OPTION  
Design No: 30 (3090)



**MHB-01**

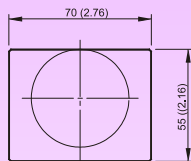
MHA-01

MHB-01

### MHB-03

### Counterbalance Valves(Modular Type)

MOUNTING SURFACE:MH\*-03-CETOP5  
ISO 05-NFPAD05

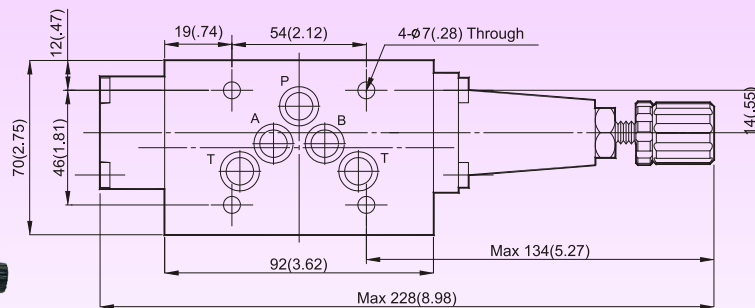


#### Valve Specifications & Attachment

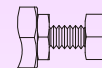
Flow Rating	100 lpm (26.5 gpm)
Max. Pressure	250 bar (3600 psi)
Weight kg(lbs.)	3.5 (7.7)
CODE:20	M6 X90LgX4pcs
CODE:2090	1/4-20UNCX3-1/2LgX4pcs
Mounting Surface O-Ring	P12 x 5 pc



SYMBOL

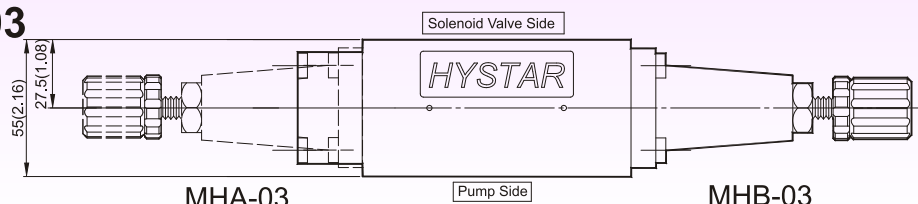


OPTION  
Design No: 30 (3090)



**MHB-03**

**MHP-03**



MHA-03

MHB-03